

The image shows a close-up of an ornate wooden organ case. The wood is a warm, light brown color. The top of the case features a decorative, multi-tiered canopy with intricate carvings. Below the canopy, there are vertical panels with decorative carvings, including a prominent star-shaped ornament. The overall design is highly detailed and traditional.

OPUS
76

HOUSE
ORGAN

OPUS 76 - HOUSE ORGAN



OPUS 76 - HOUSE ORGAN

AN ORGAN INSPIRED BY THE WORK OF
ARP SCHNITGER
(1648-1719)
AND CONSTRUCTED AS USUAL IN A SINGLE SPECIMEN.

THE CONSTRUCTION TOOK PLACE AFTER AT LEAST A COUPLE OF STUDY - TRIPS IN THE NETHERLANDS AND DIRECT CONTACTS WITH NORTH EUROPE ORGAN MAKERS SUCH AS JÜRGEN AHREND OF LEER , VAN VULPEN OF UTRECHT, GEB. REIL OF HEERDE , ORGANOLOGISTS SUCH AS B. EDSKES, ORGANISTS SUCH AS H. VOGEL: FORMIDABLE THOSE YEARS.

ALTHOUGH IT IS A MODERN AND NECESSARILY FUNCTIONAL INTERPRETATION, THE AURA WITH WHICH THIS ORGAN IS BORN IS NOT FAR FROM WHAT OVER TWO CENTURIES AGO HAS EMBELLISHED THE ANSEATIC CITIES WITH A MAGICAL FLOURISHING OF FINE ORGAN ART AS NEVER SEEN LATER.

THAT AURA THAT PRODUCED A RESOLUTE SOUND, AND YET ALLURING, CLEAR AND YET SOUND, POWERFUL AND YET SWEET, VOCAL AND PRECISE, MYSTERIOUSLY VISITED OUR SHOP, ALLOWING US TO CREATE AN INSTRUMENT THAT REPRODUCES THE TRUTH OF THOSE SOUNDS EVEN IF IN A DOMESTIC DIMENSION.

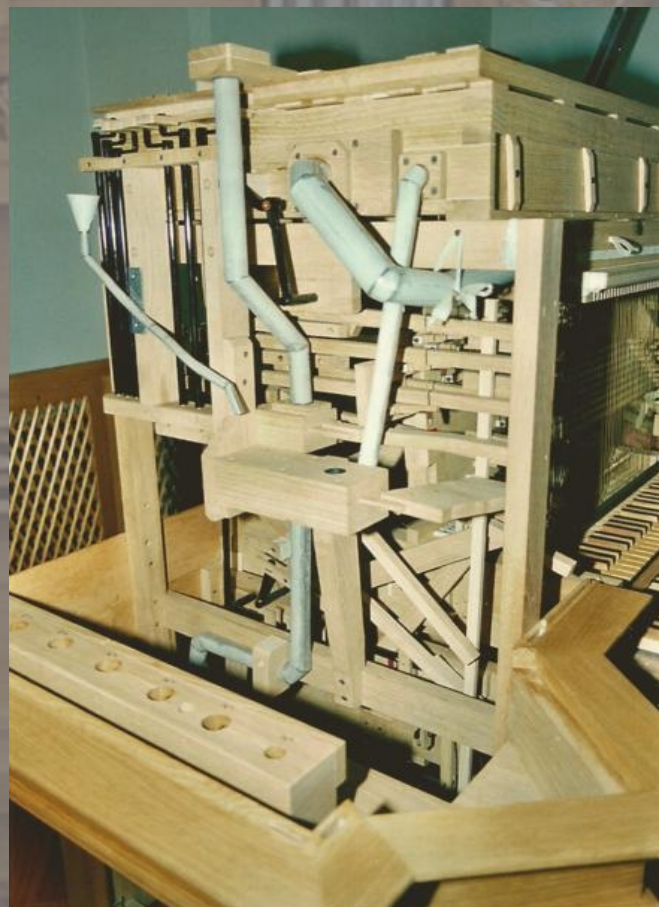
ALSO THANKS TO THE CAREFUL STUDY OF THE CONTRIBUTIONS OF G. FOCK, P.K. REINBURG, E.KRAUSS, U. PAPE AND H. VOGEL, AS WELL AS PUBLICATIONS THAT WERE ISSUED AS THEY PROCEEDED WITH THE RESTORATION OF THE SCHNITGER ORGANS, THIS INSTRUMENT IS NOT THE FRUIT OF PURE INVENTION BUT IT GET BACK TO, WHEREVER POSSIBLE, MODULES, PROPORTIONS AND MEASURES THAT SCHOLARS WERE IDENTIFYING IN THE WORK OF SCHNITGER.

OPUS 76 - HOUSE ORGAN

WITH THE EXCEPTION OF SUBBASS 16' (AHREND) AND REGAL 8' (WANNENMARCHER 1639) ALL THE MEASUREMENTS OF THE STOPS DERIVE - ALBEIT MANIPULATED - FROM THE ORIGINALS OF STEINKIRCHEN (1685-87), DEDESDORF (1697-98), CAPPEL 1680).

THE CONSOLE RESUMES THAT OF THE KLEINEORGEL OF OUDEKERK (1658) IN AMSTERDAM.

THE GENEROUS ASSIGNMENT HAS STIMULATED US TO A PARTICULARLY REFINED HISTORICAL INTERIOR CONSTRUCTION AND AN OAK SCULPTURAL DECORATIONS, ALWAYS TAKEN FROM THE TRUE, REALLY SUMPTUOUS.



OPUS 76 - HOUSE ORGAN

AT PRESENT THE ORGAN IS DIVIDED INTO TWO PARTS: THE FIRST CONCERNS THE MANUAL SECTION AND IS INCLUDED IN AN OAK CASE (SEE PHOTOS) ASSEMBLED WITHOUT THE USE OF SCREWS. THE SECOND, BEHIND THE FIRST, WHICH INCLUDES THE PEDAL – WITH FOUR STOPS - THAT IS CONTAINED IN A SPECIALLY BUILT MASONRY ROOM. IN THE FUTURE RELOCATION OF THE INSTRUMENT, THERE ARE AT LEAST TWO SOLUTIONS:

VERSION A :

ASSEMBLY OF THE ORGAN AS IT WAS CONCEIVED, WITH THE NEED TO BUILD A PROPER PEDAL CASE TO REPLACE THE MASONRY COMPARTMENT;
THE MEASUREMENTS COULD BE CM 250 X 310 X 260 (WIDTH X HEIGHT X DEPTH).

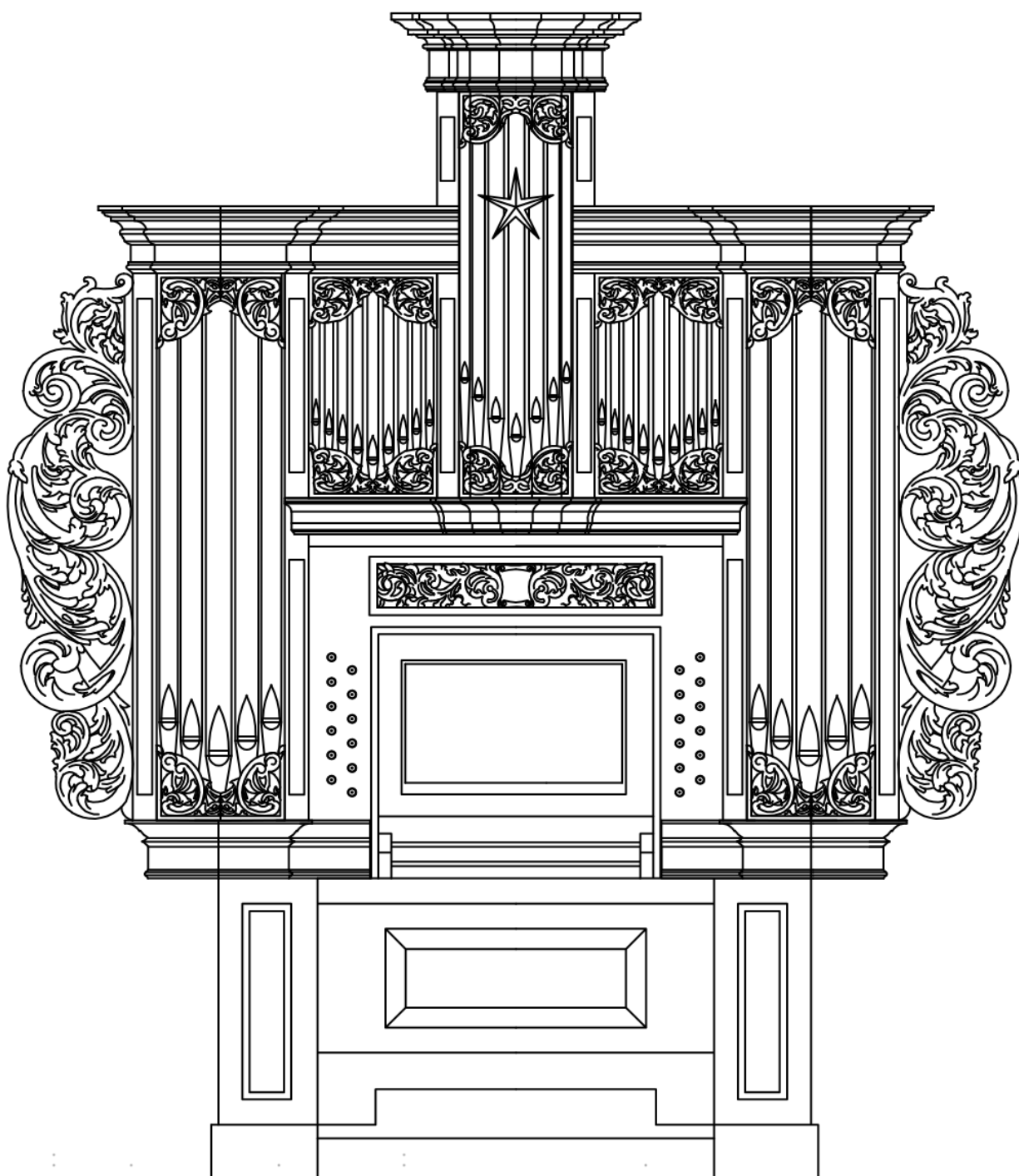
VERSION B :

CHANGING THE PEDAL TO ACCOMMODATE IT IN TWO NEW OAK TOWERS ON THE SIDES OF THE ORIGINAL CASE;
THE MEASUREMENTS COULD BE CM 350 X 310 X 120 (WIDTH X HEIGHT X DEPTH).

OPUS 76 - HOUSE ORGAN

Giorgio Carli
Bottega Organaria
Pescantina - VR

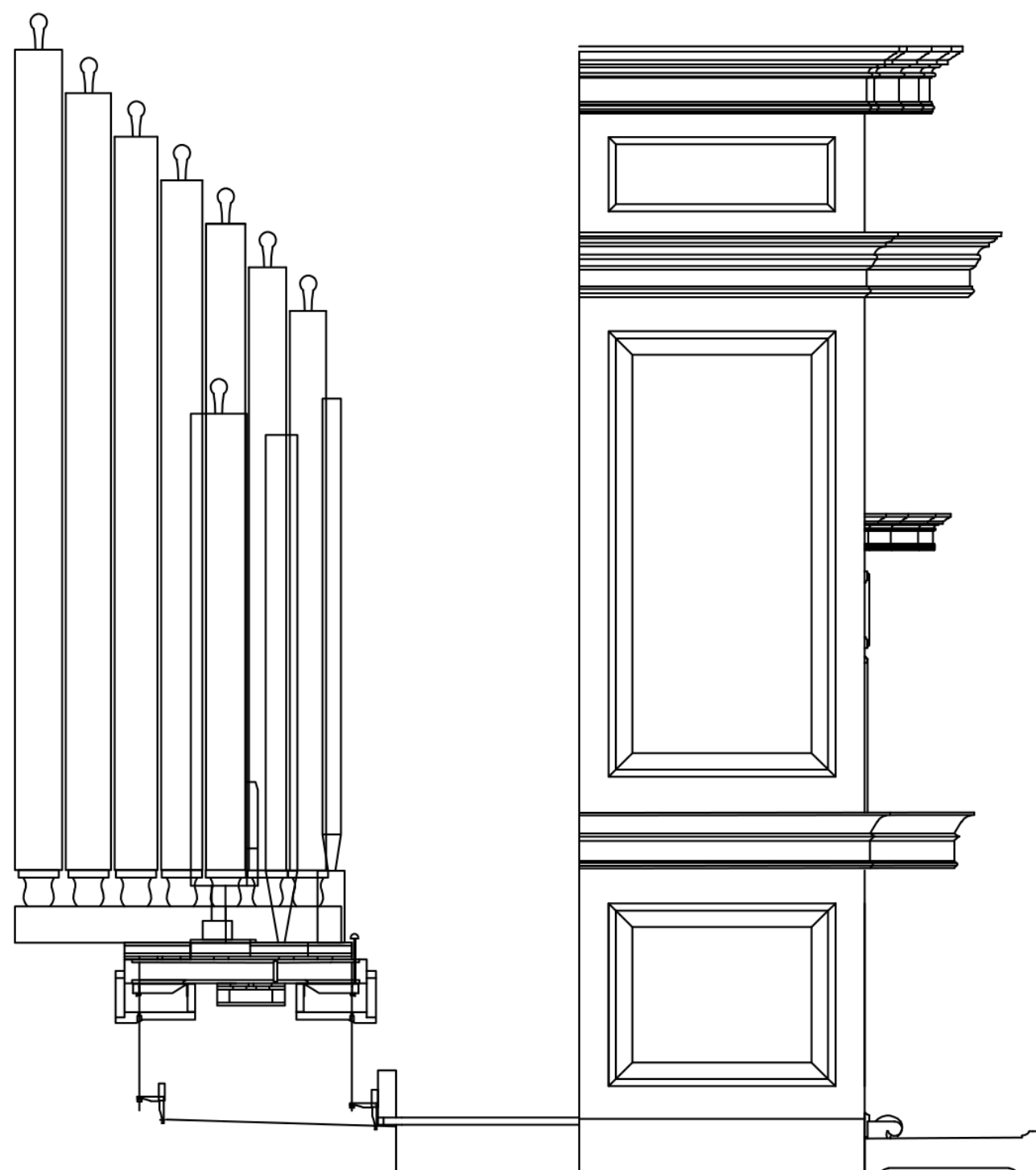
A



OPUS 76 - HOUSE ORGAN

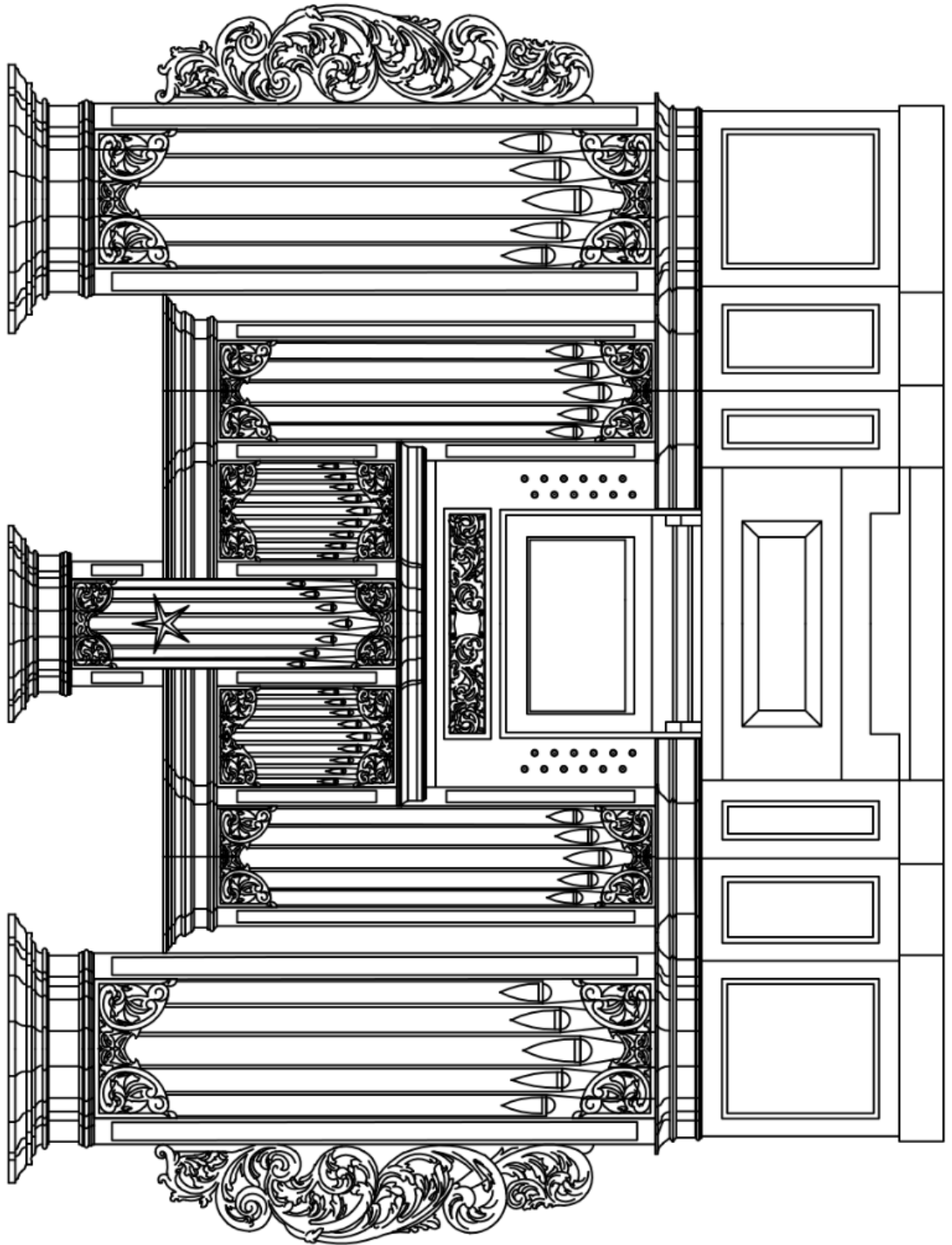
Giorgio Carli
Bottega Organaria
Pescantina - VR

A



OPUS 76 - HOUSE ORGAN

B

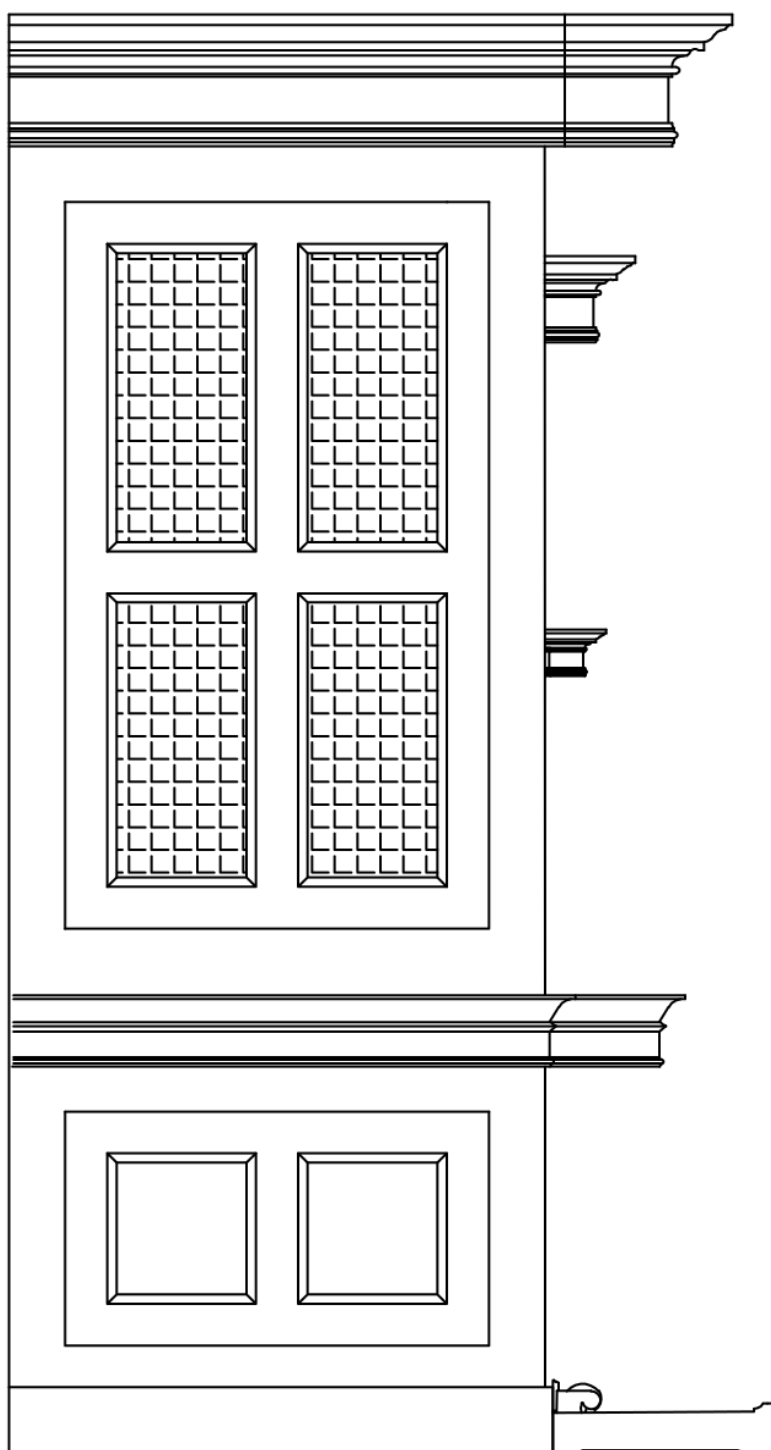


Giorgio Carli
Bottega Organaria
Pescantina - VR

OPUS 76 - HOUSE ORGAN

Giorgio Carli
Bottega Organaria
Pescantina - VR

B



OPUS 76 - HOUSE ORGAN

KEYBOARDS COMPASS C 1 - C 5

PEDAL COMPASS C 1 - D 3

MAN. I			MAN. II		PEDAL	
ROHRFLOIT	B/D	8 v.	GEDACT	8 v.	SUBBAS	16 v.
PRINCIPAL	B/D	4 v.	FLOIT	4 v.	GEDACT	8 v.
OCTAV	B/D	2 v.	QUINT	B/D	OCTAV	4 v.
REGAL	B/D	8 v.	TERZ	B/D	DULCIAN	8 v.

COUPLERS: II - I ; I - PED ; II - PED

VOGELGESANG, ZIMBELSTERN, TREMULANT

PITCH: CHORTON





Giorgio CARLI - bottega organaria

Via Ponte 118/E

I - 37026 Pescantina (Verona)

Tel +39 045 7154238 - Mobile +39 347 3508754

<https://www.carliorgani.it/>

mail: carliorgani@gmail.com | PEC: carliorgani@pec.it

